



**Bishkek
International
School**

VOICES



Newsletter for BIS Parents and Friends. No: 18 / 2024-25

17th January 2025

WELCOME BACK TO SCHOOL: NEW ADVENTURES AWAIT!

Welcome back, BIS students and families! We hope you had a restful winter break and are ready for an exciting new semester filled with learning, sports and creative events.

We're kicking off the second semester with our Winter Sports Day events. Middle and High School students will head to Chunkurchak Ski Base on Friday, January 31. Primary students in Grades 2 to 5 will also enjoy their Winter Sports Day at Chunkurchak on Friday, February 7, while Preschool to Grade 1 students will go ice-skating on the same day. More details will be shared via email soon.

Join us for a day of fun and friendly competition in winter-themed sports and activities. We look forward to seeing you there!

SECONDARY SCHOOL WINTER *Sports Day*

Join us for an exciting Winter Sports Day at BIS, exclusively for Secondary School students—fun, teamwork, and sports await!

31 JANUARY, FRIDAY

Chunkurchak Ski Base

Further information will be provided



Miss Nadine "The Thunderbird" traditional tale of Indigenous people of North America



Grade 2 Explores Global Storytelling Through Traditional Tales

As part of the unit "How We Express Ourselves," Grade 2 students explored traditional tales from around the world. They were fortunate to have the opportunity to enjoy stories shared by Grade 2 parents and teachers.

Miss Branka "The Castle Neither in the Sky nor on the Earth" Serbian traditional tale



Afef "Ommi Sissi and the cat" traditional tale from Tunisia



Mister Daniel "Alamat ng Palay - The Legend of Rice" traditional tale from Philippines



Miss Makiko "Reg Ogre that wept" Japanese traditional tale



Elaine told us the story of Hong Kong



Miss Genevieve "The Crow" Canadian traditional tale



BOOK Review

Grade 5 Blue Extended Literacy Class students Nursultan Chodurov and Nil Mira Savruk share their reflections on *Fish in a Tree* by Lynda Mullaly Hunt in this insightful book review. The novel explores themes of perseverance, kindness, and understanding through the story of Ally, a young girl with dyslexia, as she navigates her challenges with the help of her inspiring teacher, Mr. Daniels.

Nil Mira



Fish In a Tree is a really nice book. The main character Ally has trouble with reading. This book shows what it feels like for her and how she deals with it. My favorite part was Chapter 23 because I liked that Ally actually wanted to learn something new. I learned that even if you think differently or your mind works in a different way, our hearts are all the same.

I would definitely recommend this book to people that like quotes about life, but I wouldn't recommend it to students who are beginners to English.



Nursultan



In my opinion, *Fish In a Tree* is a really good book. There was a girl named Ally who has dyslexia. Dyslexia is when you have trouble with reading and writing. It was hard for Ally to be at the same level with her classmates, but it didn't stop her. She was very smart, but she thinks in a different way. She developed her reading and writing skills with the help of her teacher, Mr. Daniels.

My favorite part was Chapter 29 because it was very mindful. I also liked how Mr. Daniels said, "everyone is smart in different ways, but if you judge a fish on its ability to climb a tree, it will spend its whole life thinking that it is stupid."

From reading this book, I learned new vocabulary words, but I also learned about different perspectives. Everyone is clever, but their brains work in different ways.

I would strongly recommend this book because you can learn some things like never give up or be very brave or be very kind. Also you can learn some things about life and mindful words and vocabulary.



CPR, BROC AND KTI AWARDS

A huge well done to our award winners:

CPR (Caring, Principled, Reflective):

Roksana (Grade 6)

KTI (Knowledgeable, Thinker, Inquirer):

Sora (Grade 2), Anastasia (Grade 8)

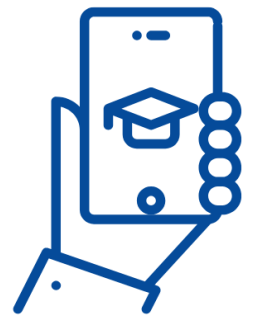
MOBILE DEVICES – TO BAN OR NOT TO BAN?

Many schools around the world are banning mobile phones for students completely during school time, and we are considering this option for the next academic year.

The main disadvantage of banning mobiles in school is that they are a very powerful tool to conduct research, so this opportunity is lost.

The main advantage of banning mobiles in school is to break the addiction that most students have to their phones or smartwatches.

Please complete [this survey](#) to tell us if you are for or against banning phones/smartwatches in BIS from summer 2025.



David Grant, Head of School

ANNIVERSARY SHOW VIDEO RELEASE

We are excited to share that the video of the BIS 14th Anniversary Show is now available for the entire school community! Revisit the unforgettable performances and celebrate the incredible talents of our students anytime.

[Part 1: Diversity, Inclusion, Belonging & Community Concert](#)

[Part 2: Shrek JR The Musical](#)



THE INTERNATIONAL SCHOOLS' ASSESSMENT (ISA) ONLINE TESTS

Most BIS students in Grades 3-9 will participate in the International Schools' Assessment (ISA) online tests this term. ELA-1 and ELA-2 English language learners are exempt to minimize stress.

- **Trial Tests:**

- MYP: Week of 20th January
- PYP: Week of 27th January

- **Official Tests:**

- MYP: 3rd–7th February
- PYP: 10th–14th February

Subjects tested include Mathematical Literacy, Reading, Writing, and Science. These tests benchmark class achievement against international standards and evaluate the effectiveness of our IB PYP and MYP programs. No special preparation or teaching is required.

Please reassure your child to approach the tests calmly and do their best. Individual ISA reports, issued in the summer, will be shared with parents and used by teachers to address learning needs. These results are not included in June's end-of-semester reports, which assess a broader range of criteria.

Dictionaries and translations will be provided as needed. Students with developing English or other learning needs will receive appropriate support, and their results will be interpreted accordingly.

For more information, including the ISA Privacy Statement, please see [this document](#). If you have any questions, feel free to contact us.

Elina Ignatova, Primary School Assistant Principal

NEASC LEARNING SURVEY RESULTS



As part of our ongoing Collaborative Learning Protocol (CLP) review process with the IB and NEASC, we recently invited the entire school community – students, parents, and staff – to share their feedback. This review is vital for the future of our school, as it directly impacts the continuation of our IB programmes and the accreditation of our High School Diploma.

Please use the links below to view the full survey results:

[BIS Leadership NEASC Survey Results](#)

[BIS Student NEASC Survey Results](#)

[BIS Parent NEASC Survey Results](#)

[BIS Staff NEASC Survey Results](#)

Thank you to all students, parents, and staff who participated in the surveys! Your input is invaluable in helping us identify areas for growth and improvements.

TEACHING STAFF'S COLLECTIVE COMMITMENT ON SHARED UNDERSTANDING OF HIGH QUALITY LEARNING AT BIS



The teaching staff at BIS kicked off Semester Two with a collaborative two-day working session!

As part of the NEASC evaluation process, we are currently focused on defining and aligning our shared understanding of what *High-Quality Learning* means at BIS.

The sessions, designed by the Programme Coordinators, included:

- **Reflecting on Our Own Learning**
- **Examining Best Practices in 21st-Century Learning**
- **Observing and Mapping Daily Practices**
- **Reviewing Examples of Shared Understanding of High-Quality Learning (SUHQL)**
- **Drafting Our Own SUHQL**

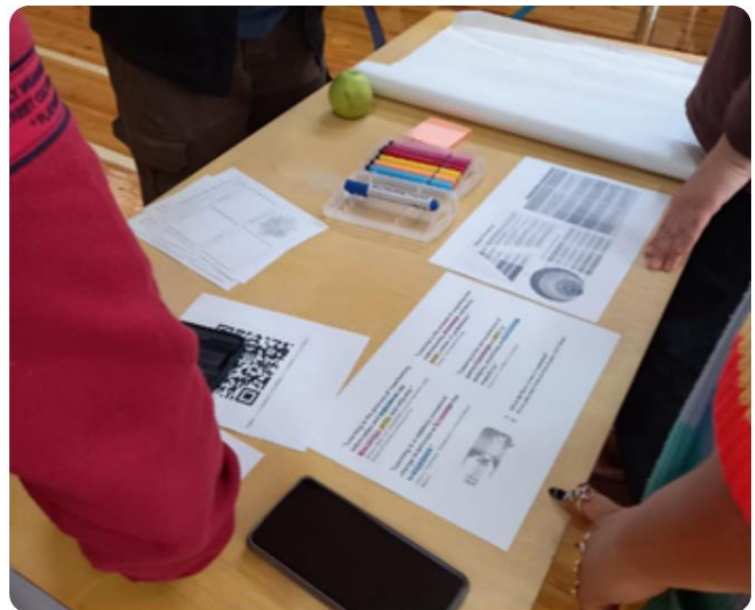
This work on building a Shared Understanding of High Quality Learning extends beyond the teaching staff; it encompasses the entire BIS community and we would love for you to get involved!



Additionally, we have five other active working groups that are addressing key aspects of school improvement as part of our NEASC process:

- **LP10 (Learning Community Wellbeing):** Focusing on fostering a supportive and healthy learning environment.
- **LP9 (Learning Space and Time):** Exploring ways to optimize physical spaces and schedules to enhance learning.
- **LP7 (Inclusion, Diversity, Equity, and Belonging):** Promoting an inclusive and equitable school culture.
- **LP5 (Learner Autonomy and Engagement):** Encouraging student independence and active participation in their learning.
- **LP3 (Evidence of Learning):** Enhancing how we document and utilize learning outcomes to drive improvement.

Your participation in these working groups is vital, as improving our school requires a whole-community approach. We invite parents and members of the wider BIS community to join us in this meaningful process. As a valued member of the BIS community, your voice is essential in shaping our shared vision and ensuring continued growth and success!



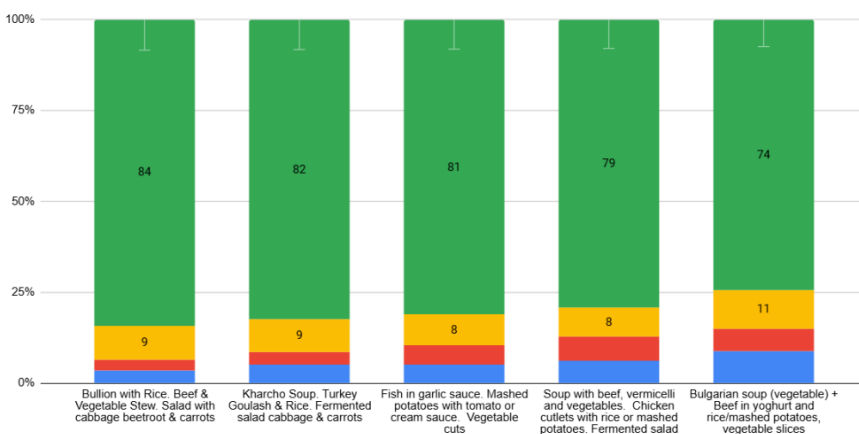
SCHOOL FOOD – STUDENT FEEDBACK & NEW MENU

Starting Monday, 13 January 2025, we introduced a [new menu](#) designed by a professional nutrition specialist. Parents were also invited to try this new menu, and they have been sampling the lunches and providing immediate feedback by selecting smiley or unsmiling faces on the café screen based on their satisfaction with the food each day. We have also been surveying students from G0–G12 and staff using the same system since Monday. The results of these surveys can be found below.

😊 😊 😐 😞 Green bars represent the % who gave the full smiley, orange bars the almost happy smiley.

If any parents would like to try the new menu, please fill in [this form](#).

If you have any feedback or suggestions, please email our Nutrition Committee nutrition@bis.kg.



Mirzat Osmonova, Head of Administration, Deputy Head of School

IB Learner Profile



1ST WEEK: KNOWLEDGEABLE

Activities within 20-24th of January 2025:

- Invention competition for primary school students in the Primary library
- IB Learner Profile dice for PYP in the Café
- Parent-Teacher Meeting Quiz in the Cafe
- IB Learner Profile card matching activity in Cafe at lunchtime



Knowledgeable

I love Learning new things

JANUARY SCHOLASTIC BOOK CLUB



OUR JANUARY BOOK CLUB IS HERE!

The deadline for orders is **Monday, February 3, 2025**.

The books will be delivered directly to BIS from the UK at the beginning of March.

This time, to reduce paper usage, we are not providing paper leaflets. Instead, you can browse the selection and place your order online using the following link:

<http://eu-schools.scholastic.co.uk/bishkekinternationalschool>

Remember: EVERY ORDER EARNS FREE BOOKS FOR OUR SCHOOL LIBRARY!

THE 2025-26 SCHOOL YEAR CALENDAR IS NOW AVAILABLE

Plan ahead with important dates:

Visit our website at [this link](#)

SCHOOL YEAR 2025/2026

■ School Vacation
 ■ Public Holiday in KR – School Closed
 ■ Teacher in-Service Day
 ■ Sports Events
 ■ Events
 ■ Meetings or Off Timetable

August 2025							September 2025							October 2025							November 2025								
M	Tu	W	Th	F	Sat	Sun	M	Tu	W	Th	F	Sat	Sun	M	Tu	W	Th	F	Sat	Sun	M	Tu	W	Th	F	Sat	Sun		
							1	2	3	4	5	6	7	6	7	8	9	10	11	12	3	4	5	6	7	8	9		
4	5	6	7	8	9	10	8	9	10	11	12	13	14	13	14	15	16	17	18	19	10	11	12	13	14	15	16		
11	12	13	14	15	16	17	15	16	17	18	19	20	21	20	21	22	23	24	25	26	17	18	19	20	21	22	23		
18	19	20	21	22	23	24	22	23	24	25	26	27	28	27	28	29	30	31	24	25	26	27	28	29	30				
25	26	27	28	29	30	31	29	30													24	25	26	27	28	29	30		
13-22 August: Teacher in-Service Orientation 25 August: First Day of School 29 August: Meet the Teachers 31 August: Independence Day							1-13 Sept: G6-12 Overnight Trips & MYP Adventure 12 Sept: All Parents Meeting – Parents Association 20 Sept: Asia Day Festival 25 Sept-3 Oct: PYP "Bring your Parents to School" days 30 Sept: Sports Day in Spartak Stadium: Grade 4-12							16 Oct: Individual Parents-Teacher Meetings 17 Oct: UN Day at BIS 19-22 Oct: IB/NEASC CLP Peer Review Visit to BIS 23-31 Oct: Autumn/Fall Break							7 Nov: Fall Festival 7-8 Nov: Days of History & Memory of Ancestors 12 Nov: Mental Health Awareness Day 15 Nov: Future Careers Day & Friendship Day 22 Nov: BIS Annual Debate Tournament								
December 2025							January 2026							February 2026							March 2026								
M	Tu	W	Th	F	Sat	Sun	M	Tu	W	Th	F	Sat	Sun	M	Tu	W	Th	F	Sat	Sun	M	Tu	W	Th	F	Sat	Sun		
1	2	3	4	5	6	7	5	6	7	8	9	10	11	2	3	4	5	6	7	8	2	3	4	5	6	7	8		
8	9	10	11	12	13	14	12	13	14	15	16	17	18	9	10	11	12	13	14	15	9	10	11	12	13	14	15		
15	16	17	18	19	20	21	19	20	21	22	23	24	25	16	17	18	19	20	21	22	16	17	18	19	20	21	22		
22	23	24	25	26	27	28	26	27	28	29	30	31	23	24	25	26	27	28	1	23	24	25	26	27	28	29			
29	30	31																	30	31									
13 Dec: BIS Anniversary Show – Official School Day 16 Dec: PYP Student led Conferences 19 Dec: Last Day of First Semester / Dad Mors 22 Dec - 9 Jan – Winter break							5 Jan: BIS Alumni Reunion Dinner 7 Jan: Orthodox Christmas 12 Jan: Staff in-Service Training 13 Jan: First Day of Second Semester 22 Jan: Parent-Teacher Meetings 30 Jan: Secondary Winter Sports Day							6 Feb: Primary Writer Sports Day 13 Feb: Valentine's Day organized by Students 19 Feb: Languages in Our Lives Day 26 Feb: STEM Fair 28 Feb: BISMLUN – Model United Nations							8 March: International Women's Day 13 March: G12 CAS/G11 TOK Exhibition 14 March: Inter-school Chess Tournament 16-20 March: Spring Break. 21 March: Nooruz 20 March: Drama Art – public holiday 26 March: G12 Visual Art Exhibition 26 March: Nooruz Celebration at BIS								
April 2026							May 2026							June 2026							July 2026								
M	Tu	W	Th	F	Sat	Sun	M	Tu	W	Th	F	Sat	Sun	M	Tu	W	Th	F	Sat	Sun	M	Tu	W	Th	F	Sat	Sun		
			1	2	3	4	5	4	5	6	7	8	9	10	1	2	3	4	5	6	7				1	2	3	4	5
6	7	8	9	10	11	12	11	12	13	14	15	16	17	8	9	10	11	12	13	14	6	7	8	9	10	11	12		
13	14	15	16	17	18	19	18	19	20	21	22	23	24	15	16	17	18	19	20	21	13	14	15	16	17	18	19		
20	21	22	23	24	25	26	18	19	20	21	22	23	24	22	23	24	25	26	27	28	20	21	22	23	24	25	26		
27	28	29	30				25	26	27	28	29	30	31	29	30						27	28	29	30	31				
30 March – 3 April: MYP IOU 7 April: Revolution Day 14 April: MYP Community Project Presentations 16 April: Inclusion Day 15 May: Art Exhibition & Poetry Evening 18 April: Europe Day Festival 23 April: PYP Exhibition 24 April: All Parents Meeting – Parents Association 29 April: Primary School Sports Day End of April: KCSE and IBDP Exam Sessions start							1 May: Labour Day – public holiday 1-9 May: Public holidays 5 May: Constitution Day – public holiday 9 May: Victory Day – public holiday 15 May: Art Exhibition & Poetry Evening 18 May: Parents Association Garage Sale 23 May: Africa Day Festival 27 May: Kurman Art – public holiday							5 June: PYP Student led Conferences 7 June: High School Prom 10 June: Class of 2025 Reflection Dinner 11 June: High School Graduation Ceremony 15 June: Graduations for Preschool 3, Grade 5, Grade 8 16 June: Primary School Educational Visits Day 17 June: Parent-Teacher Meetings 18 June: Last Day of School / All Americas Barbecue 19 June: Teacher in-Service Day							July: Vacation First day of school 2025/26: Monday August 26th								

OUR CURRICULUM

The curriculum for each level of the school are available online for you to review. Please check the curriculum and let us know if you have any questions.

[Preschool to G5 PYP Curriculum 24/25](#) – any questions, email Maria Corbett, PYP Coordinator, mcorbett@bis.kg

[Grade 6-8 MYP Curriculum 24/25](#) – any questions, email Nadine Lemoine, MYP Coordinator, nlemoine@bis.kg

[Grade 9-10 IGCSE Curriculum 24/25](#) – any questions, email Makiko Inaba, IGCSE Coordinator, minaba@bi.kg

[Grade 11-12 DP Curriculum 24/25](#) – any questions, email Makiko Inaba, DP Coordinator, minaba@bis.kg

NEW SCHOOL MENU

The lunch menu for January 20-24 is **Menu B**. You can view the [new school menu](#) on our school website. Form Teachers and our Chef are responsible for adjusting this menu to avoid any foods your child cannot eat, according to the information provided to us by you.

UPCOMING EVENTS – 2024/25 Calendar is [here](#)

- 18 January, Saturday: AISB Table Tennis Tournament
- 23 January, Thursday: Parent-Teacher Meetings
- 31 January, Friday: Winter Sports Day – Secondary
- 7 February, Friday: Winter Sports Day – Primary
- 8 February, Saturday: Interschool Chess Tournament
- 8-9 February, Saturday-Sunday: AISB Basketball Tournament
- 14 February, Friday: Valentine’s Day organized by Students
- 19-22 February: CAFA Basketball, Astana

KEEP IN TOUCH

If you have anything you want to discuss or suggestions for the school, please contact your child’s Homeroom or Form Teacher and they will either answer directly or pass the message on to the right person. Messages can be sent in English or Russian, or in your own language. If you do not know the correct email address for the person you want to write to, please write to info@bis.kg and our Reception will forward your email to the right person. Homeroom and Form Teachers for 2024/25 are given below:

Position	Name	Contact
BIS Reception	Albina / Meerim / Zhanara	info@bis.kg ; 0312 214 406, 0770 214 406
School Bus enquiries	Burmakan Birnazarova	bus@bis.kg
ECA (extra-curricular activities) enquiries	Bojana Askovic / Nazira Almasbekova	eca@bis.kg
ManageBac & SchoolsBuddy Admin	Esentur Dildebekov	edildebekov@bis.kg
Admissions Officers	Gulsara Sheraly kyzy / Begimai Urmanbetova	admissions@bis.kg ; 0706 200 200
Registrar	Nurbek Chagataev	nchagataev@bis.kg
Doctor	Asel Turusbaeva	doctor@bis.kg
Head of School	David Grant	dgrant@bis.kg
Head of Administration	Mirzat Osmonova	mosmonova@bis.kg
High School Assistant Principal	Nurbek Chagataev	nchagataev@bis.kg
Middle School Assistant Principal	Gulbara Akunova	gakunova@bis.kg
Primary School Assistant Principal	Elina Ignatova	eignatova@bis.kg
IGCSE & DP Coordinator	Makiko Inaba	minaba@bis.kg
MYP Coordinator	Nadine Lemoine	nlemoine@bis.kg
PYP Coordinator	Maria Corbett	mcorbett@bis.kg

National Curriculum Coordinator	Chynara Abdyaeva	cabdyaeva@bis.kg
Learning Diversity, Inclusion and Counselling (LDIC) Coordinator	Kyzjibek Tekenova	ktekenova@bis.kg
Chair of the Governing Board (GB)	Fred Huston	gbchair@bis.kg
Governing Board Secretary	Alina Seitalieva	gbsec@bis.kg
Parents Association President	JJ Gurga	papres@bis.kg ; pamc@bis.kg
Parents Association Secretary	Alina Seitalieva	pasec@bis.kg
Homeroom/Form Classes		
Preschool 1	Laura Meliou & Aizhan Zhamanakova	lmeloliu@bis.kg ; azhamanakova@bis.kg
Preschool 2	Nuraida Asanbaeva & Zharkyn Oskonbaeva	lasanbaeva@bis.kg ; joskonbaeva@bis.kg
Preschool 3	Bivo Chongo & Kulkayir Junusheva & Nurzat Osmonova	bchongo@bis.kg ; kjunusheva@bis.kg ; nosmonova@bis.kg
Grade 0 Blue	Paul Fahidi & Nargiza Zhusupova	pfahidi@bis.kg ; nzhusupova@bis.kg
Grade 0 Yellow	Peiyong Lin & Karina Bolotkanova	plin@bis.kg ; kbolotkanova@bis.kg
Grade 1 Blue	Nelia Mwanza & Begaiym Djumaeva	nmwanza@bis.kg ; bdjumaeva@bis.kg
Grade 1 Yellow	Begimai Keneshbekova & Rabiia Erkulova	bkeneshbekova@bis.kg ; rerkulova@bis.kg
Grade 2 Blue	Morgan Chadderton & Kanykei Tursunalieva	mchadderton@bis.kg ; ktursunalieva@bis.kg
Grade 2 Yellow	Oksana Chichilova & Aike Uralieva	ochichilova@bis.kg ; auralieva@bis.kg
Grade 3 Blue	Michaela Saber & Deniz Karybaeva	msaber@bis.kg ; dkarybaeva@bis.kg
Grade 3 Yellow	Genevieve Maser & Altynai Kalieva	gmaser@bis.kg ; alkalieva@bis.kg
Grade 4 Blue	Daniel Bilog & Gulmira Sabyrbekova	sking@bis.kg ; gsabyrbekova@bis.kg
Grade 4 Yellow	Ana Marie Alcala & Aizirek Dzhakypbekova	aalcala@bis.kg ; adzhakypbekova@bis.kg
Grade 5 Blue	Rona Butler & Zharkynai Iiebaeva	rbutler@bis.kg ; zhilebaeva@bis.kg
Grade 5 Yellow	Natalie Small & Sezim Tologonova	nsmall@bis.kg ; stologonova@bis.kg
Grade 6	Marc Navo Garreta & Janyl Namazbekova	mgarreta@bis.kg ; jnamazbekova@bis.kg
Grade 7	Francois Spies & Nurzhamal Alymova	fspies@bis.kg ; nalymova@bis.kg
Grade 8	Steve Wagenseller & Ann Smirnova	swagenseller@bis.kg ; asmirnova@bis.kg
Grade 9	Lane Spies & Stephen Labanowich	lspies@bis.kg ; slabanowich@bis.kg
Grade 10	Aigul Sakieva & Aleksander Sheyerman	asakieva@bis.kg ; asheyerman@bis.kg
Grade 11	Jan Scott & Nazira Abakirova	jscott@bis.kg ; nabakirova@bis.kg
Grade 12	Andrew Wheeler & Claire Berger	awheeler@bis.kg ; cberger@bis.kg

WHATSAPP & TELEGRAM

Most school communication is sent by email or in Voices. We also have Telegram and WhatsApp broadcast channels to repeat general email messages. The same info is on WhatsApp and Telegram, and on both English and Russian channels. If you do not check emails, join the channel that is easiest for you to follow.



[BIS news \(Eng\)](#) OR [BIS новости \(Рус\)](#)



[BIS news \(Eng\)](#) OR [BIS новости \(Рус\)](#)

FIND US ON THE WEB



BIS website - www.bis.kg

BAILANYSH NEWS
Connecting the BIS Community

www.bailanysh.com



[BIS Instagram - @bis.kg](#)



BIS Alumni Association - [@bis_alumni](#)



[BIS Facebook - facebook.com/biskgz](https://facebook.com/biskgz)



Act for Community - [@actcom.bis](#)



[Parents Association - facebook.com/bis.parents.127](https://facebook.com/bis.parents.127)



Happy New Year and welcome back to school! We are thrilled to start the second semester, and it was wonderful to see so many familiar faces once again, as well as welcoming new friends into our preschool family.

This week, we had so much fun revisiting some of the topics we explored last semester, reinforcing concepts and engaging in activities that sparked creativity and excitement. Our little learners enjoyed a variety of activities across different subjects, including:

- **Art:** We let our imaginations run wild with colorful creations and fun hands-on projects.
- **Physical Education:** The children had a blast

moving, stretching, and working on their coordination.

- **Music and Dance:** We enjoyed singing, dancing, and exploring rhythm and movement together.
- **Outdoor Exploration:** The fresh air and outdoor play gave our preschoolers the opportunity to explore and learn through nature.

It has been a joyful week filled with laughter, exploration, and learning. We are looking forward to the amazing moments of growth and fun that the coming weeks will bring.

Thank you for your continued support, and we can't wait to share more of our adventures with you!

Preschool Team



